

Application Features:

- Miniature PCB antenna for 2.4G ISM band (WIFI & BLUETOOTH)
- Omni-directional Radiation Pattern
- High Efficiency

Electrical Specification

Frequency:	2.4 – 2.483 Ghz
Nominal Impedance:	50 Ohms
Gain:	1.6dBi @ 2.4GHz,
WSWR:	< 1.5:1
Max Power:	20dBm
Polarization:	Linear
Directivity:	Omni-directional

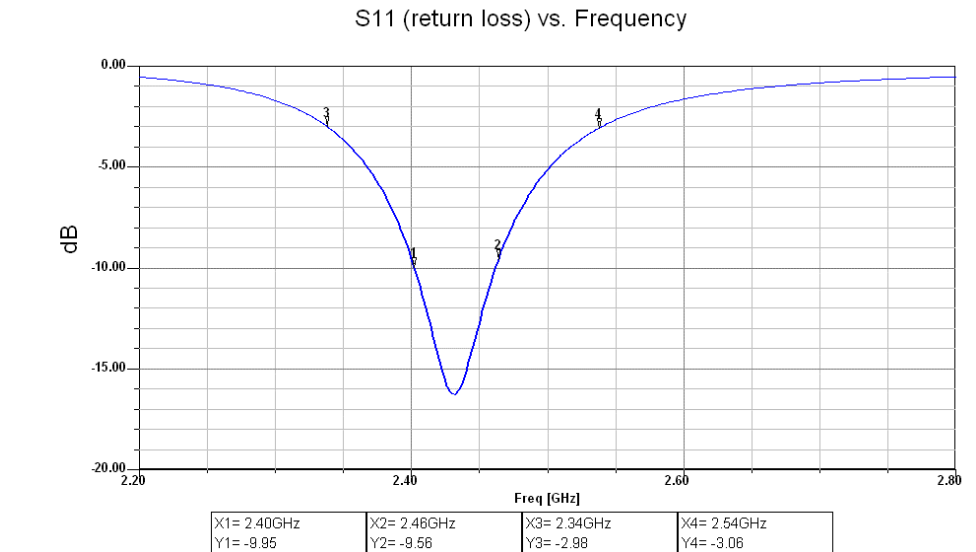
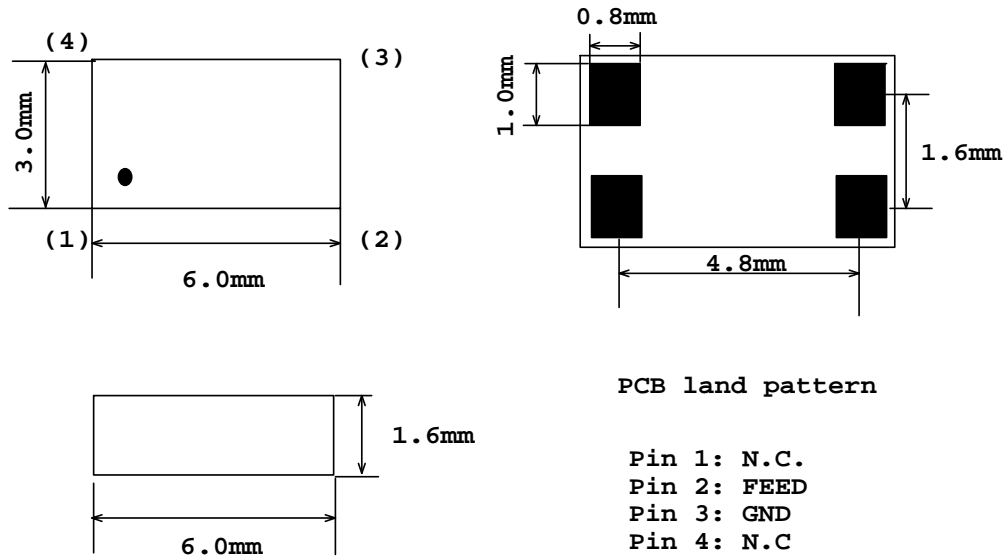


Figure 1. S11 vs Frequency Curve

Mechanical Dimensions



Layout Consideration:

Antenna J0603 layout need follow the layout recommendation. As show on Figure 2.

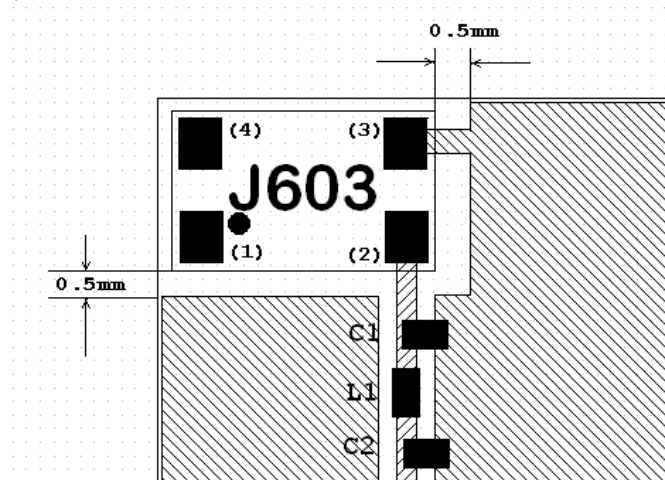


Figure 2: Antenna Layout

Antenna is placed at the Conner of the PCB board with 0.5mm clearance from the ground plane. Due to the dielectric difference and surroundings, the antenna could be slightly de-tuned. C1, C2 and L1 is placed close to the feeding port, which could be used to turn the center frequency to 2.44Ghz.