

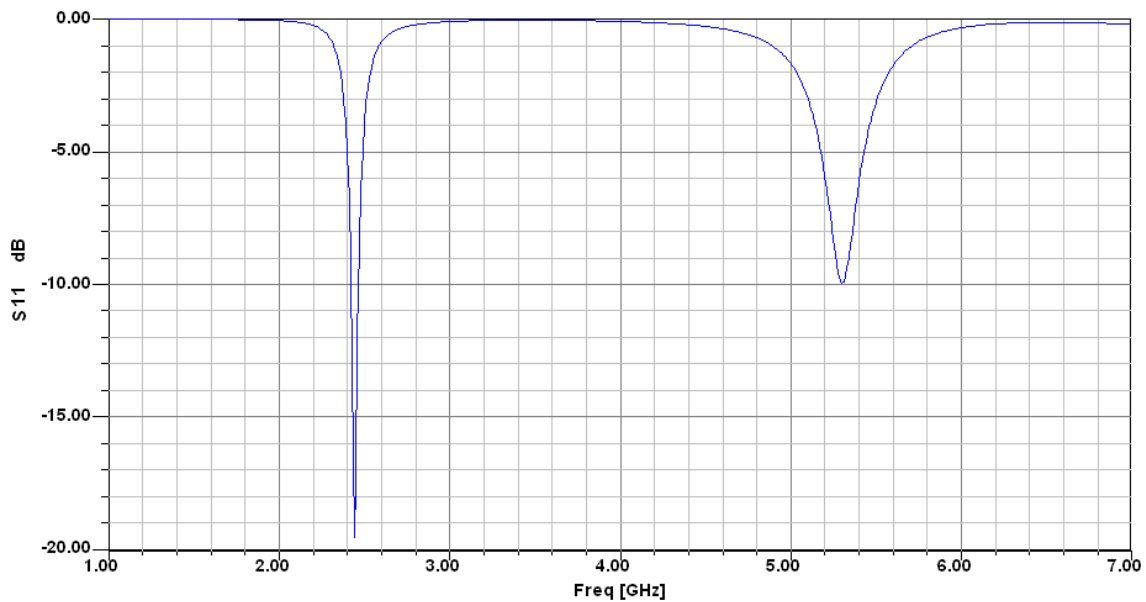
Application Features:

- Miniature PCB antenna for 2.4G/5G ISM band (WIFI 802.11a/b/g/n/ac & BLUETOOTH)
- Omni-directional Radiation Pattern
- High Efficiency

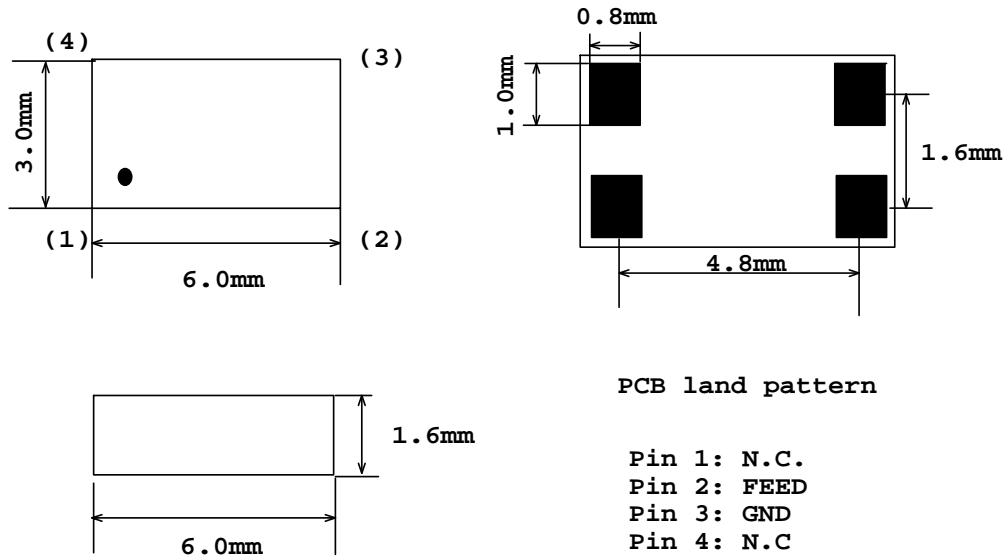
Electrical Specification

Frequency:	2.4GHz/5Ghz
Nominal Impedance:	50 Ohms
Gain:	1.6dBi @ 2.4GHz, 0dB@5Ghz
WSWR:	< 1.5:1
Max Power:	20dBm
Polarization:	Linear
Directivity:	Omni-directional

Figure 1. S11 vs Frequency Curve



Mechanical Dimensions



Layout Consideration:

Antenna J0603 layout need follow the layout recommendation. As show on Figure 2.

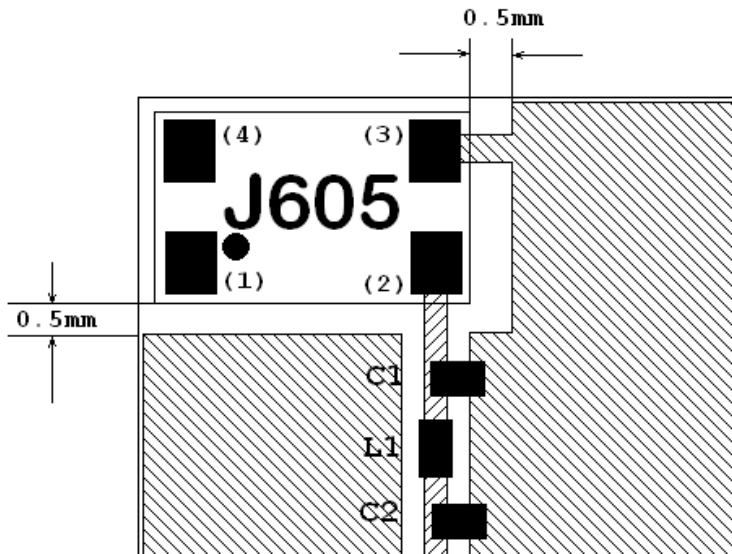


Figure 2: Antenna Layout

Antenna is placed at the Conner of the PCB board with 0.5mm clearance from the ground plane. Due to the dielectric difference and surroundings, the antenna could be slightly de-tuned. C1, C2 and L1 is placed close to the feeding port, which could be used to turn the center frequency to 2.44Ghz.