

## Features/Configuration



- U.FL plug to U.FL plug, 1.13mm Cable
- Operate to 6GHz
- 100% RF and connectivity tested
- RoHS Complaint

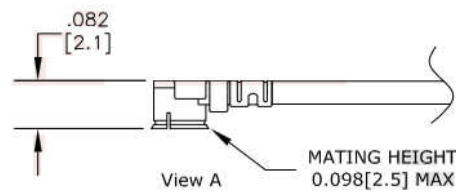
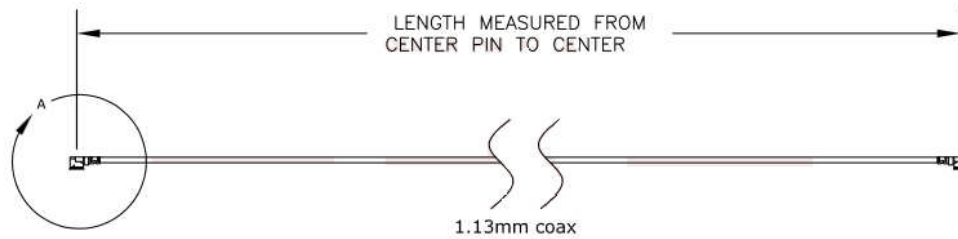
## Electrical Specification

Frequency Range	DC – 6 GHz
VSWR:	1.5:1
Impedance:	50 $\Omega$
Loss vs. Frequency	

Frequency	500Mhz	1000Mhz	2.5GHz	6GHz
Insertion loss (dB/ft)	0.4	0.67	1.14	1.68

## Mechanical Specification

Operating Temperature:	-55 to + 125 degree C
Cable Type:	1.13mm
Inner Conductor Type:	Stranded
No of Shields:	1
Cable Outer Conductor 1:	Tinned Copper
Dielectric Type:	FEP
Jacket Material:	FEP
Jacket Diameter:	1.12mm



## Ordering Information

UFLDF-XXMM - XX - length in millimeter.

For example: UFLDF-64MM,